



PELLICULE

페리큐르 LCP

PELLICULE LCP

특수성형법, 분자배향제어기술로 액정 폴리머 수지의 필름화를 실현!!

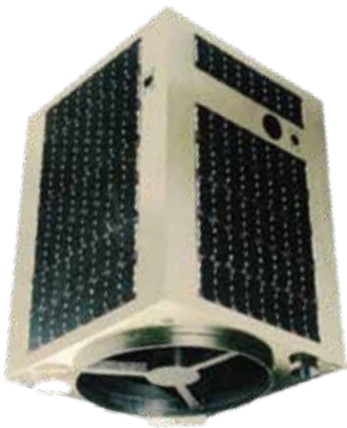
Creation of LCP film using special molding methods and control of molecular orientation.

액정 폴리머 필름

뛰어난 내열 및 절연성! 펠릿에서부터 필름화 가공

Liquid Crystal Polymer (LCP) Film

Exceeding in heat-resistance and insulation! Film processed from pellets



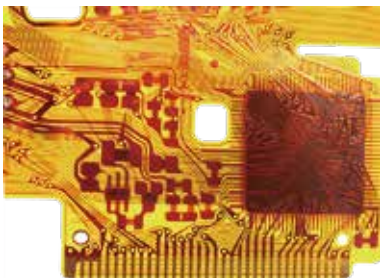
특수내열절연재

Special heat-resistant insulating material



내열공정재

Heat-resistant process material



- 기계적 특성, 전기적 특성이 뛰어남
- 할로겐 프리
- 내열성이 뛰어남
- 가스배리어성이 뛰어남
- 흡수율이 극히 낮음
- 유전특성이 뛰어남
- 아웃가스가 극히 적음
- 표준 두께는 0.050mm

- Excellent mechanical and electrical properties
- Halogen-free
- Excellent heat-resistant properties
- Excellent gas barrier properties
- Extremely low water absorption
- Excellent dielectric properties
- Extremely low outgassing
- Standard thickness 0.050mm



용도 예
Usage



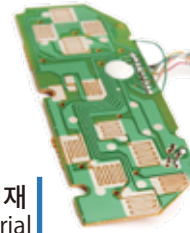
고내열성
Heat resistance

고절연성
High insulation



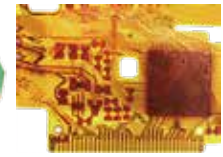
특수내열절연재
Heat-resistant insulation

인공위성
Satellite



공정재
Process material

고내열성
Heat-resistance



내열성공정재
Heat-resistant process material



저유전율
Low Dk

밀리파 레이더
Millimeter-wave radar

고속전송 고주파기기
High-speed transmission
High-frequency equipment



차세대 통신
5G communications



저유전정접
Low Df

차세대 통신 디바이스용 기판부재
Base material for high speed and high-frequency applications

액정 폴리머 필름

뛰어난 내열 및 절연성! 펠릿에서부터 필름화 가공

Liquid Crystal Polymer (LCP) Film

Exceeding in heat-resistance and insulation! Film processed from pellets

물성 Physical properties

시험항목 Items	단위 Unit	측정치 Value
인장강도 Tensile strength	MPa	290
융점 Melting temperature	°C	280
절연파괴강도 Dielectric strength	KV/mm	210
체적저항율 Volume resistivity	$\Omega \cdot \text{cm}$	2×10^{16}
비유전율 (1GHz) Dielectric constant	—	≤ 3.0
유전정접 (1GHz) Dielectric dissipation factor	—	≤ 0.002

※기재된 수치는 측정치이며, 보증치가 아닙니다.
The above value is measured value, and it's not guaranteed value.

고속전송특성 High speed transmission properties

